

# GT300/8300

Heavy-Duty/Fully Automatic  
Overhead Concealed  
Swing Door Operator

Where SERVICE meets SATISFACTION



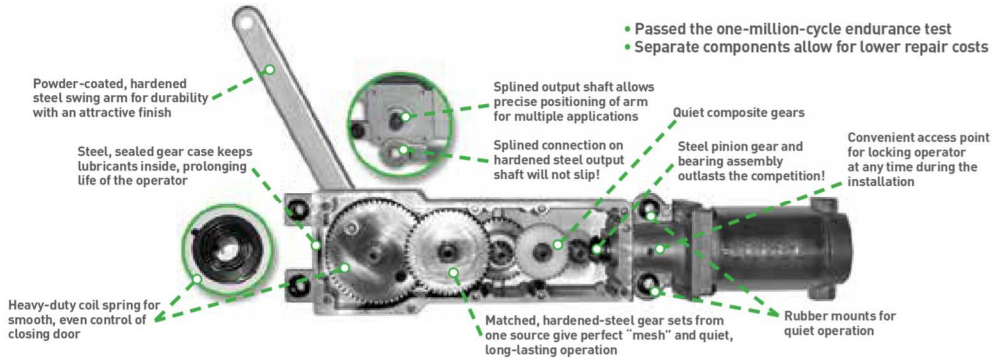
## Product Features and Benefits

- Adjustable closing speeds and low power consumption to **enhance energy savings**
- Heavy-duty motor and mechanical gearbox **offer longevity and dependability**
- Mechanical operator with microprocessor control **provides quiet, efficient, and smooth operation**
- Available with **bottom load or convenient sideload header**
- Available as a **complete door package including operators, sensors and jambs and stiles**
- Optimized for use with various sensing systems
- Other various features available, such as recycle on obstruction, anti-slam wind control, and stack and wind pressure compensation



## GT300/8300 Series Heavy-Duty/Fully Automatic/Overhead Concealed Swing Door Operator

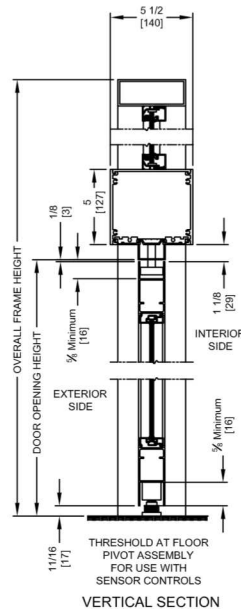
The NABCO GT300/8300 Overhead Concealed Swing Door Operator is engineered for interior and exterior use, and designed to automate essentially any new or existing door frame. This heavy-duty system can handle pedestrian traffic under the busiest conditions. Its proven mechanical design provides smooth, long-lasting operation. Sideload header access panel simply pivots up and locks into position, out of the way, enabling quick installation and ease of servicing. NABCO ensures the highest level of customer satisfaction and the lowest failure rate.



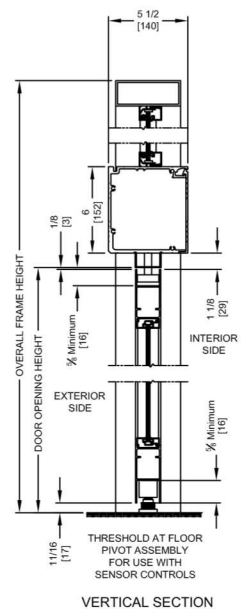
### PRODUCT INFORMATION

MODEL	GT300/8300
Header dimensions	Bottom load – 5" H x 5 1/2" D (GT300) Side load – 6" H x 5 1/2" D (GT8300)
Standard finish	Clear and dark bronze anodized
Optional finishes	Painted, clad, special anodized
Mounting	Overhead concealed
Installation types	Push or pull
Operation voltage	120VAC
Auxiliary power output	12VDC 750mA
Operator drive	Electro-mechanical
Motor voltage	Pulse width modulated
Control type	Programmable microcompressor
Door panel weight	300 lbs.
Adjustable close	Force and speed
Closing method	Springs
Basic features	Obstacle detection in opening and closing cycles Sequential or timer mode operation LCD screen for programming and diagnostics Open- or closed-circuit safety inputs Momentary or maintained activation
Switch modes	On, off, hold-open
Opening and closing speed	Adjustable
Hold-open time	Adjustable (0-30 seconds)
Code compliances	ANSI A156.10
Approvals	UL, ULC

GT300  
Bottom Load



GT8300  
Side Load



#### CONFIGURATIONS:

THE GT300/8300 is available for multiple configurations, such as single doors, simultaneous pairs, and dual egress, as well as the Opman configuration, which is a single continuous header for a pair of doors containing a manual closer on one side and an automatic operator on the other.

### NABCO Service and Specifications

Along with the NABCO factory branches, NABCO has the largest independently owned network of automatic door distributors in North America. Their friendly, qualified installers and technicians always strive to exceed your expectations from install to after-sales service. NABCO's factory branches and independent distributors provide AAADM-certified technicians to ensure your doors meet all ANSI A156.10/A156.19 standards.

Complete three-part specifications and CAD drawings are available at [www.NABCOentrances.com](http://www.NABCOentrances.com).



Member of the **Nabtesco** Group

NABCO ENTRANCES INC.

582 W18717 Gemini Drive | Muskego, WI 53150 | 877-622-2694 | Fax 888-679-3319

[www.NABCOentrances.com](http://www.NABCOentrances.com) | Email [info@NABCOentrances.com](mailto:info@NABCOentrances.com)



Distributed by: